

# REPLACEMENT PARTS GUIDE

622G and 622GP Motor Grader (PIN: 1DW622G\_\_C685731- )

622G and 622GP Motor Grader (PIN: 1DW622G\_\_D685731- )



Secondary Air Filter Element

[AT178517](#)

Interval (hrs) - As Required.



Primary Air Filter Element

[AT178516](#)

Interval (hrs) - As Required.



Auxiliary Fuel Filter Element (If Equipped)

[AT365869](#)

Interval (hrs) - 500.



HYDRAULIC TANK BREATHER FILTER

[AT101565](#)

Interval (hrs) - 2000.



HYDRAULIC OIL FILTER

[AT367840](#)

Interval (hrs) - 1000.



FUEL TANK BREATHER

[H216169](#)

Interval (hrs) - 1000.



AXLE OIL FILTER

[AT335492](#)

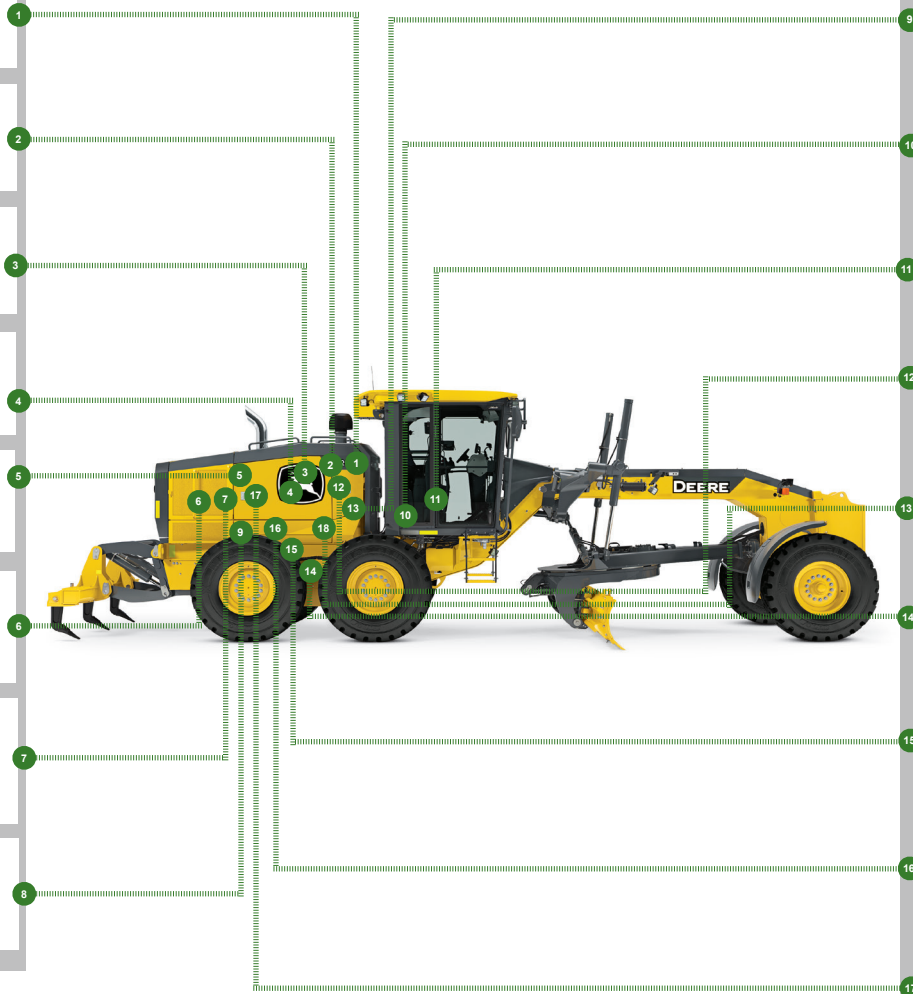
Interval (hrs) - 2000.



TRANSMISSION OIL FILTER

[AT335492](#)

Interval (hrs) - 2000.



ENGINE ROCKER ARM COVER GASKET

[R524497](#)

Interval (hrs) - 2000.



CAB RECIRCULATION AIR FILTER

[AT307501](#)

Interval (hrs) - As Required.



CAB FRESH AIR FILTER

[AT191102](#)

Interval (hrs) - As Required.



PRIMARY FUEL FILTER ELEMENT

[RE541922](#)

Interval (hrs) - 500.



FINAL FUEL FILTER ELEMENT

[RE522878](#)

Interval (hrs) - 500.



CRANKSHAFT DAMPER

[RE508578](#)

Interval (hrs) - 4500.



REAR AXLE BREATHER FILTER

[AT101565](#)

Interval (hrs) - 2000.



ENGINE OIL FILTER

[RE504836](#)

Interval (hrs) - 500.



6WD HYDRAULIC OIL FILTER (IF EQUIPPED)

[AT367840](#)

Interval (hrs) - 2000.



**JOHN DEERE**  
Genuine Parts and Service

CLICK PART NUMBER TO BUY

\*See operator's manual for additional details.

# PARTS AND CAPACITIES INFORMATION

622G and 622GP Motor Grader (PIN: 1DW622G \_\_ \_C685731- )

622G and 622GP Motor Grader (PIN: 1DW622G \_\_ \_D685731- )



Part Description	Qty or capacity	Change Interval In Hours
John Deere Plus-50™ II Engine Oil	26.0 L (6.9 gal)	500
John Deere Hydrau™ Hydraulic System Oil	53.0 L (14.0 gal)	4000
John Deere Hy-Gard™ 6WD Hub Oil (if equipped) (each)	7.2 L (1.9 gal)	1000
John Deere Hy-Gard™ Transmission, Axle and Tandem Oil	66.4 L (17.5 gal)	2000
John Deere Hy-Gard™ Circle Gear Case Oil (standard circle)	5.7 L (1.5 gal)	2000
John Deere Hy-Gard™ Circle Gear Case Oil (premium circle)	6.4 L (1.7 gal)	4000
John Deere Cool-Gard™ II Pre-Mix	44.0 L (11.6 gal)	6000

# PARTS AND CAPACITIES INFORMATION

**622G and 622GP Motor Grader (PIN: 1DW622G\_\_C685731- )**  
**622G and 622GP Motor Grader (PIN: 1DW622G\_\_D685731- )**



Fluid Analysis Kits <sup>3</sup>		
Diesel Engine Oil	1	250
Transmission Oil	1	500
Axle Oil	1	500
Tandem Oil	2	500
Hydraulic Oil	1	500
6WD Hub Oil (if equipped)	2	500
Diesel Fuel	1	500
Engine Coolant	1	500

<sup>1</sup>Perform initial service once after the first 500 hours of operation.

<sup>2</sup>See operator's manual for recommended oil type and oil viscosities based on operating temperatures.

<sup>3</sup>Based on fluid analysis results, intervals may need to be adjusted for operating conditions. Consult a Local John Deere dealer.

*Plus-50 is a trademark of Deere & Company*

*Hydrau is a trademark of Deere & Company*

*Hy-Gard is a trademark of Deere & Company*

*Cool-Gard is a trademark of Deere & Company*

## Service Intervals

As Required	
<input type="checkbox"/> Clean cooler cores	<input type="checkbox"/> Inspect accessory belt and belt tensioner spring
<input type="checkbox"/> Clean and tighten battery terminals	<input type="checkbox"/> Replace engine air intake filter elements
<input type="checkbox"/> Clean battery compartment	<input type="checkbox"/> Drain fuel tank sump
<input type="checkbox"/> Replace cab fresh air and cab recirculation filters	<input type="checkbox"/> Drain primary fuel filter and water separator
<input type="checkbox"/> Lubricate circle pinion (standard circle)	<input type="checkbox"/> Drain auxiliary fuel filter and water separator (if equipped)
<input type="checkbox"/> Check tire pressure	<input type="checkbox"/> Clean camera lens (if equipped)
<input type="checkbox"/> Check blade circle and draft frame wear inserts (standard circle)	<input type="checkbox"/> Transmission control unit (TCU) calibration
<input type="checkbox"/> Check blade lift cylinder sockets	<input type="checkbox"/> 6WD controller calibration (if equipped)
<input type="checkbox"/> Lubricate saddle locking pin holes	<input type="checkbox"/> Cross slope sensors calibration (if equipped)
<input type="checkbox"/> Blade side shift wear insert adjustment	<input type="checkbox"/> Hydraulic valves calibration (if equipped)
Every 10 Hours or Daily	
<input type="checkbox"/> Check hydraulic tank oil level	<input type="checkbox"/> Check engine oil level
<input type="checkbox"/> Check transmission oil level	<input type="checkbox"/> Check engine coolant surge tank level
Every 50 Hours	
<input type="checkbox"/> Lubricate frame hinge pivots	<input type="checkbox"/> Lubricate front axle lean bar pivot
<input type="checkbox"/> Lubricate lift cylinders	<input type="checkbox"/> Lubricate front axle steering pin
<input type="checkbox"/> Lubricate draft frame ball	<input type="checkbox"/> Lubricate tie rod ends
<input type="checkbox"/> Lubricate front mounted scarifier or dozer blade (if equipped)	<input type="checkbox"/> Lubricate steering cylinders
<input type="checkbox"/> Lubricate Balderson™ style front lift group (if equipped)	<input type="checkbox"/> Lubricate midmount scarifier (if equipped)
<input type="checkbox"/> Lubricate front axle oscillation pin	<input type="checkbox"/> Lubricate circle side shift cylinder
<input type="checkbox"/> Lubricate front axle lean pivot casting pins	<input type="checkbox"/> Lubricate saddle locking pin
Every 250 Hours	
<input type="checkbox"/> Check hybrid battery electrolyte level (if equipped)	<input type="checkbox"/> Take engine oil sample
Initial Service—500 Hours <sup>1</sup>	
<input type="checkbox"/> Replace axle oil filter	<input type="checkbox"/> Replace transmission oil filter
Every 500 Hours	
<input type="checkbox"/> Check tandem oil level	<input type="checkbox"/> Replace primary fuel filter and water separator
<input type="checkbox"/> Check axle oil level	<input type="checkbox"/> Replace auxiliary fuel filter and water separator (if equipped)
<input type="checkbox"/> Drain and refill engine oil and replace filter	<input type="checkbox"/> Take hydraulic oil sample
<input type="checkbox"/> Drain and refill engine oil (quick service) (if equipped)	<input type="checkbox"/> Take transmission oil sample
<input type="checkbox"/> Lubricate tandem pivots	<input type="checkbox"/> Take axle oil sample
<input type="checkbox"/> Check circle gear case oil level (standard circle)	<input type="checkbox"/> Take tandem oil sample
<input type="checkbox"/> Check brake accumulator	<input type="checkbox"/> Take 6WD hub oil sample (if equipped)
<input type="checkbox"/> Replace final fuel filter	<input type="checkbox"/> Take engine coolant sample
<input type="checkbox"/> Check 6WD hub oil level (if equipped)	<input type="checkbox"/> Take diesel fuel sample
<input type="checkbox"/> Lubricate circle ring gear (premium circle)	

## Service Intervals

Every 1000 Hours	
<input type="checkbox"/> Drain and refill 6WD hub oil (if equipped)	<input type="checkbox"/> Check coolant condition
<input type="checkbox"/> Adjust front wheel bearings (standard axle only)	<input type="checkbox"/> Replace fuel tank breather
<input type="checkbox"/> Check engine air intake hoses	
Every 2000 Hours	
<input type="checkbox"/> Drain and refill axle oil	<input type="checkbox"/> Replace axle oil filter
<input type="checkbox"/> Drain and refill circle gear case oil (standard circle)	<input type="checkbox"/> Replace hydraulic oil filter
<input type="checkbox"/> Clean engine crankcase ventilation tube	<input type="checkbox"/> Replace transmission oil filter
<input type="checkbox"/> Drain and refill transmission oil	<input type="checkbox"/> Replace 6WD hydraulic oil filter (if equipped)
<input type="checkbox"/> Drain and refill transmission oil (quick service) (if equipped)	<input type="checkbox"/> Check and adjust engine valve lash
<input type="checkbox"/> Replace rear axle breather filter and hydraulic tank breather filter	
Every 4000 Hours	
<input type="checkbox"/> Drain and refill hydraulic tank oil	<input type="checkbox"/> Drain and refill tandem oil
<input type="checkbox"/> Drain and refill hydraulic tank oil (quick service) (if equipped)	<input type="checkbox"/> Clean transmission pump inlet screen
<input type="checkbox"/> Drain and refill circle gear case oil (premium circle)	
Every 4500 Hours	
<input type="checkbox"/> Replace engine crankshaft damper	
Every 6000 Hours	
<input type="checkbox"/> Drain and refill cooling system	<input type="checkbox"/> Drain and refill cooling system (quick service) (if equipped)
<sup>1</sup> Perform initial service once after the first 500 hours of operation.	