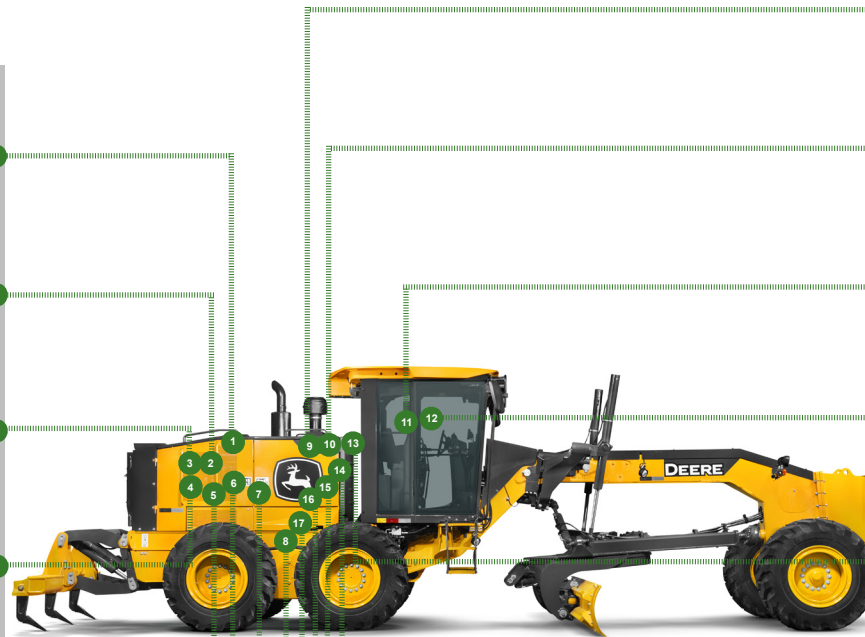


# REPLACEMENT PARTS GUIDE

670G Motor Grader (PIN: 1BZ670G\_\_C00001— ) , (PIN: 1BZ670G\_\_D00001— )



**HYDRAULIC TANK BREATHER FILTER**  
[AT101565](#)  
Interval (hrs) - 2000.

**FUEL TANK BREATHER**  
[H216169](#)  
Interval (hrs) - 1000.

**AXLE OIL FILTER**  
[AT335492](#)  
Interval (hrs) - 2000.

**6WD HYDRAULIC OIL FILTER (IF EQUIPPED)**  
[AT367840](#)  
Interval (hrs) - 2000.

**HYDRAULIC OIL FILTER**  
[AT367840](#)  
Interval (hrs) - 2000.

**TRANSMISSION OIL FILTER**  
[AT335492](#)  
Interval (hrs) - 2000.

**AUXILIARY FUEL FILTER ELEMENT (IF EQUIPPED)**  
[AT365869](#)  
Interval (hrs) - 500.

**REAR AXLE BREATHER FILTER**  
[AT101565](#)  
Interval (hrs) - 2000.

**PRIMARY AIR FILTER ELEMENT**  
[AT175223](#)  
Interval (hrs) - As Required.

**SECONDARY AIR FILTER ELEMENT**  
[AT175224](#)  
Interval (hrs) - As Required.

**CAB FRESH AIR FILTER**  
[AT191102](#)  
Interval (hrs) - As Required.

**CAB RECIRCULATION AIR FILTER**  
[AT307501](#)  
Interval (hrs) - As Required.

**ENGINE OIL FILTER**  
[DZ118283](#)  
Interval (hrs) - 500.

**PRIMARY AND FINAL FUEL FILTER KIT**  
[RE525523](#)  
Interval (hrs) - 500.

**ENGINE ROCKER ARM COVER GASKET**  
[R527884](#)  
Interval (hrs) - 2000.

**CRANKSHAFT DAMPER**  
[RE522932](#)  
Interval (hrs) - 4500.

**CRANKSHAFT DAMPER**  
[RE57604](#)  
Interval (hrs) - 4500.



# PARTS AND CAPACITIES INFORMATION

670G Motor Grader (PIN: 1BZ670G\_\_C000001— ) , (PIN: 1BZ670G\_\_D000001— )

Part Description	Qty or capacity	Change Interval In Hours
John Deere Plus-50™ II Engine Oil <sup>3</sup>	28.0 L (7.4 gal)	500
John Deere Hydrau™ Hydraulic System Oil <sup>3</sup>	53.0 L (14.0 gal)	4000
John Deere Hy-Gard™ 6WD Hub Oil (if equipped) <sup>3</sup>	7.2 L (1.9 gal)	1000
John Deere Hy-Gard™ Transmission and Axle Oil <sup>3</sup>	66.4 L (17.5 gal)	2000
John Deere Hy-Gard™ Tandem Oil <sup>3</sup> (each)	74.0 L (19.5 gal)	4000
John Deere Hy-Gard™ Circle Gear Case Oil <sup>3</sup> (standard circle)	5.7 L (1.5 gal)	2000
John Deere Cool-Gard™ II Pre-Mix	48.5 L (12.8 gal)	6000
Fluid Analysis Test Kits <sup>4</sup>		
Diesel Engine Oil	1	250
Transmission Oil	1	500
Axle Oil	1	500
Tandem Oil	2	500
Hydraulic Oil	1	500
6WD Hub Oil (if equipped)	2	500
Diesel Fuel	1	500
Engine Coolant	1	500

<sup>3</sup>See operator's manual for recommended oil type and oil viscosities based on operating temperatures.

<sup>4</sup>Based on fluid analysis results, intervals may need to be adjusted for operating conditions. Consult an authorized John Deere dealer.

Plus-50 is a trademark of Deere & Company  
 Hydrau is a trademark of Deere & Company  
 Hy-Gard is a trademark of Deere & Company  
 Cool-Gard is a trademark of Deere & Company



## Service Intervals

As Required	
<input type="checkbox"/> Clean cooler cores	<input type="checkbox"/> Blade side shift wear insert adjustment
<input type="checkbox"/> Clean and tighten battery terminals	<input type="checkbox"/> Inspect accessory belt and belt tensioner spring
<input type="checkbox"/> Clean battery compartment	<input type="checkbox"/> Replace engine air intake filter elements
<input type="checkbox"/> Replace cab fresh air and cab recirculation filters	<input type="checkbox"/> Drain fuel tank sump
<input type="checkbox"/> Lubricate circle pinion (standard circle)	<input type="checkbox"/> Drain primary fuel filter and water separator
<input type="checkbox"/> Check tire pressure	<input type="checkbox"/> Drain auxiliary fuel filter and water separator (if equipped)
<input type="checkbox"/> Check blade circle and draft frame wear inserts (standard circle)	<input type="checkbox"/> Check camera (if equipped)
<input type="checkbox"/> Check blade lift cylinder sockets	<input type="checkbox"/> Transmission control unit calibration
<input type="checkbox"/> Lubricate saddle locking pin holes	
Every 10 Hours or Daily	
<input type="checkbox"/> Check hydraulic tank oil level	<input type="checkbox"/> Check engine oil level
<input type="checkbox"/> Check transmission oil level	<input type="checkbox"/> Check engine coolant surge tank level
Every 50 Hours	
<input type="checkbox"/> Lubricate frame hinge pivots	<input type="checkbox"/> Lubricate front axle steering pin
<input type="checkbox"/> Lubricate lift cylinders	<input type="checkbox"/> Lubricate tie rod ends
<input type="checkbox"/> Lubricate draft frame ball	<input type="checkbox"/> Lubricate steering cylinders
<input type="checkbox"/> Lubricate dozer blade (if equipped)	<input type="checkbox"/> Lubricate midmount scarifier (if equipped)
<input type="checkbox"/> Lubricate front axle oscillation pin	<input type="checkbox"/> Lubricate circle side shift cylinder
<input type="checkbox"/> Lubricate front axle lean pivot casting pins	<input type="checkbox"/> Lubricate saddle locking pin
<input type="checkbox"/> Lubricate front axle lean bar pivot	
Initial Service—250 Hours <sup>1</sup>	
<input type="checkbox"/> Drain and refill engine oil and replace filter	<input type="checkbox"/> Drain and refill engine oil (quick service) (if equipped)
Every 250 Hours	
<input type="checkbox"/> Check hybrid battery electrolyte level (if equipped)	<input type="checkbox"/> Take engine oil sample
Initial Service—500 Hours <sup>2</sup>	
<input type="checkbox"/> Replace axle oil filter	<input type="checkbox"/> Replace transmission oil filter
Every 500 Hours	
<input type="checkbox"/> Check tandem oil level	<input type="checkbox"/> Replace primary fuel filter and water separator
<input type="checkbox"/> Check axle oil level	<input type="checkbox"/> Replace auxiliary fuel filter and water separator (if equipped)
<input type="checkbox"/> Drain and refill engine oil and replace filter	<input type="checkbox"/> Take hydraulic oil sample
<input type="checkbox"/> Drain and refill engine oil (quick service) (if equipped)	<input type="checkbox"/> Take transmission oil sample
<input type="checkbox"/> Lubricate tandem pivots	<input type="checkbox"/> Take axle oil sample
<input type="checkbox"/> Check circle gear case oil level (standard circle)	<input type="checkbox"/> Take tandem oil sample
<input type="checkbox"/> Check brake accumulators	<input type="checkbox"/> Take 6WD hub oil sample (if equipped)
<input type="checkbox"/> Replace final fuel filter	<input type="checkbox"/> Take engine coolant sample
<input type="checkbox"/> Check 6WD hub oil level (if equipped)	<input type="checkbox"/> Take diesel fuel sample

## Service Intervals

Every 1000 Hours	
<input type="checkbox"/> Drain and refill 6WD hub oil (if equipped)	<input type="checkbox"/> Check coolant condition
<input type="checkbox"/> Adjust front wheel bearings (standard axle only)	<input type="checkbox"/> Replace fuel tank breather
<input type="checkbox"/> Check engine air intake hoses	
Every 2000 Hours	
<input type="checkbox"/> Drain and refill axle oil	<input type="checkbox"/> Replace axle oil filter
<input type="checkbox"/> Drain and refill circle gear case oil (standard circle)	<input type="checkbox"/> Replace hydraulic oil filter
<input type="checkbox"/> Clean engine crankcase ventilation tube	<input type="checkbox"/> Replace transmission oil filter
<input type="checkbox"/> Drain and refill transmission oil	<input type="checkbox"/> Replace 6WD hydraulic oil filter (if equipped)
<input type="checkbox"/> Drain and refill transmission oil (quick service) (if equipped)	<input type="checkbox"/> Check and adjust engine valve lash
<input type="checkbox"/> Replace rear axle breather filter and hydraulic tank breather filter	
Every 4000 Hours	
<input type="checkbox"/> Drain and refill hydraulic tank oil	<input type="checkbox"/> Drain and refill tandem oil
<input type="checkbox"/> Drain and refill hydraulic tank oil (quick service) (if equipped)	<input type="checkbox"/> Clean transmission pump inlet screen
Every 4500 Hours	
<input type="checkbox"/> Replace engine crankshaft damper	
Every 6000 Hours	
<input type="checkbox"/> Drain and refill cooling system	<input type="checkbox"/> Drain and refill cooling system (quick service) (if equipped)