

REPLACEMENT PARTS GUIDE

744K Series II (PIN: 1DW744K_ _ _ F664578—)



ENGINE AIR FILTER ELEMENT
PRIMARY - [AT223226](#)
SECONDARY - [AT175224](#)
 Interval (hrs) - 1000.

ENGINE ROCKER ARM COVER GASKET
[R526607](#)
 Interval (hrs) - 2000.

DIESEL EXHAUST FLUID (DEF) DOSING UNIT FILTER - [RE554498](#)
 Interval (hrs) - 1000.

DIESEL EXHAUST FLUID (DEF) HEADER SUCTION SCREEN(S.N. —678012)
[AT458050](#)
 Interval (hrs) - 1000.

DIESEL EXHAUST FLUID (DEF) TANKBREATHER FILTER - [H216169](#)
BAFFLE (S.N. 678013—) - [AT467495](#)
 Interval (hrs) - 1000.

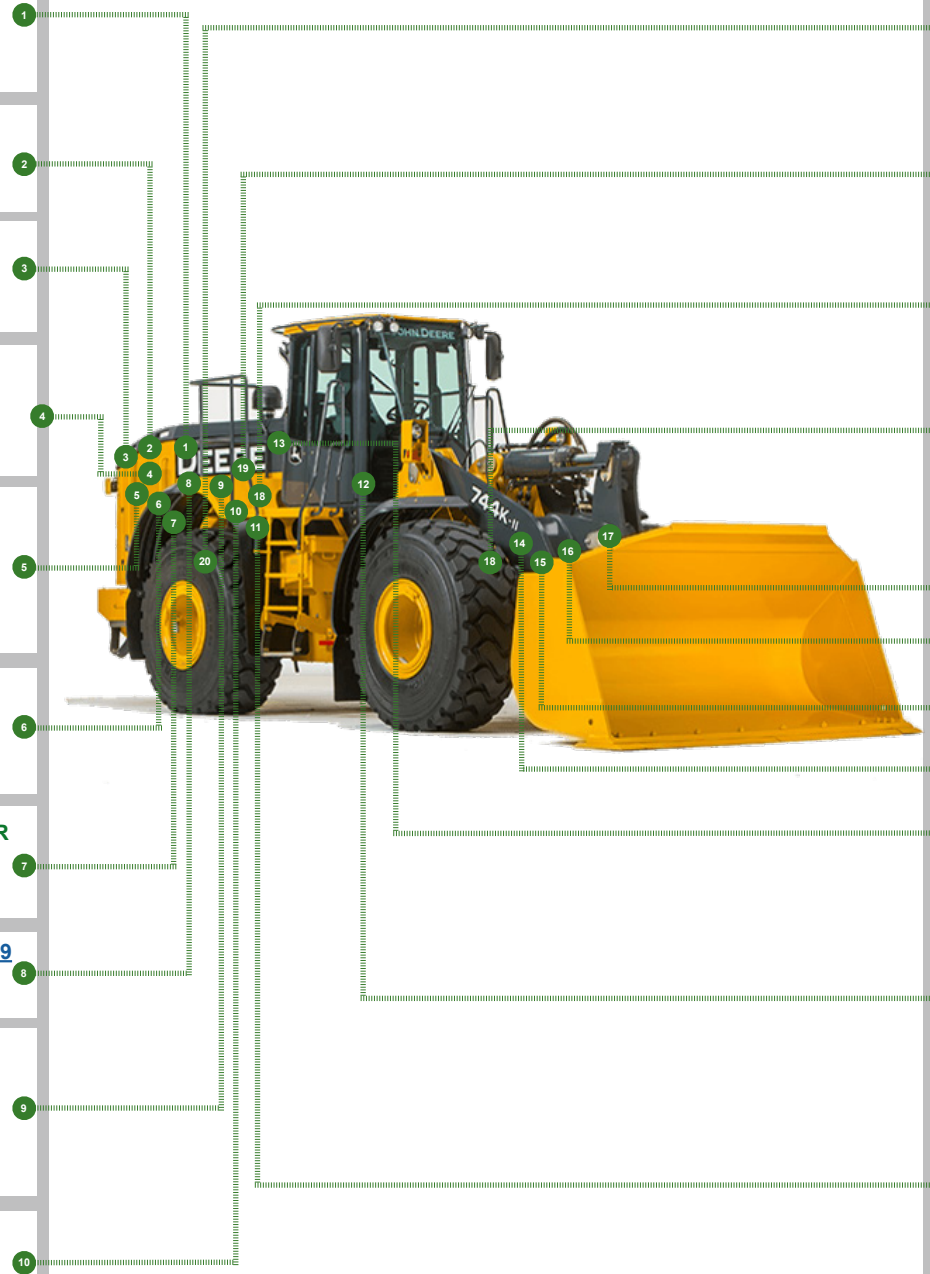
DIESEL PARTICULATE FILTER (COMPONENT OF EXHAUST FILTER)
[RE561836](#)
 Interval (hrs) - 1000.

ENGINE AIR CLEANER DUST UNLOADER VALVE - [T158495](#)
 Interval (hrs) - 1000.

FUEL TANK BREATHER FILTER - [H216169](#)
 Interval (hrs) - 500.

PRIMARY FUEL FILTER
[RE539465](#)
FINAL FUEL FILTER
[RE533910](#)
 Interval (hrs) - 500.

OIL FILTER
[RE521420](#)
 Interval (hrs) - 250.



TRANSMISSION OIL FILTERS
[AT336140](#)
 Interval (hrs) - 2000.

FAST FILL FUEL BREATHER FILTER (IF EQUIPPED)
[T225008](#)
 Interval (hrs) - 500.

DRIVELINE DAMPER
[RE537960](#)
 Interval (hrs) - 4000.

AXLE OIL FILTER
[AH128449](#)
 Interval (hrs) - 1000.

OUTER PIN SEALS
BOOM TO ATTACHMENT JOINT
[AT341092](#)
ATTACHMENT-TO-BUCKET LINK JOINT
[AT410593](#)
BUCKET LINK-TO-BELLCRANK JOINT
[AT410593](#)
BELLCRANK-TO-BOOM JOINT
[AT410592](#)
STEERING CYLINDER JOINT
[AT276674](#)
 Interval (hrs) - As Required.







CAB FRESH AIR FILTER ELEMENT
[AT191102](#)
CAB RECIRCULATION AIR FILTER ELEMENT - [AT307501](#)
 Interval (hrs) - As Required.

HYDRAULIC SYSTEM RETURN FILTERS- [AT335977](#)
 Interval (hrs) - 4000.
HYDRAULIC RESERVOIR BREATHER FILTER - [T225008](#)
 Interval (hrs) - 500.



REPLACEMENT PARTS GUIDE

744K Series II (PIN: 1DW744K__ _ F664578—)

Part Description	Part Number	Qty or capacity	Change Interval In Hours
John Deere Plus-50™ II Engine Oil ² 	TY26674	34.0 L (9.0 gal)	500
John Deere Hydrau™ Hydraulic Oil ² 	TY27367	159.0 L (42.0 gal.)	4000
COOL-GARD™ II Pre-Mix 	TY26575	44.8 L (11.8 gal)	6000
John Deere Hy-Gard™ Transmission 	TY6354	28.0 L (7.4 gal)	2000
John Deere Hy-Gard™ Park Brake 	TY6354	0.71 L (24.0 oz)	1000
John Deere Hy-Gard™ Front and Rear Axle 	TY6354	55.0 L (14.5gal)	2000
Fluid Analysis Kits³			
Engine Oil	AT346594	1	250
Transmission Oil	AT346594	1	500
Axle Oil	AT346594	2	500
Hydraulic Oil	AT346594	1	500
Diesel Fuel	AT346594	1	500
Engine Coolant	AT346599	1	500
<p>² For recommended oil type and oil viscosities based on operating temperatures, see Operator's Manual.</p> <p>³ Based on fluid analysis results, intervals may need to be adjusted for your operating conditions. Consult your authorized John Deere dealer.</p>			

Service Intervals

744K Series II (PIN: 1DW744K__ _ F664578—)

As Required	
• Inspect tires and check pressure	• Clean cooler cores
• Check wheel bolt/nut torque	• Check rear camera and radar object detection (ROD) system—if equipped
• Inspect engine air cleaner elements	• Check window washer fluid level
• Check and clean fuel sending unit pick-up screen	• Drain water from primary fuel filter with water separator
• Inspect air conditioner compressor and alternator belt	• Check and clean or replace cab fresh air filter
• Replace fast fill fuel breather—if equipped	• Check and clean or replace cab recirculating air filter
• Service exhaust filter	• Drain fuel tank
Every 10 Hours or Daily	
• Clean air cleaner dust unloader valve	• Check hydraulic system oil level
• Check coolant level at surge tank	• Check transmission oil level
• Check engine oil level	• Inspect outer pin seals
Initial Service - 100 Hours ¹	
• Drain and refill front and rear axle oil	• Replace axle oil filters
Every 100 Hours	
• Lubricate loader linkage and cylinder pivots	
Every 250 Hours	
• Take engine oil sample	
Every 500 Hours	
• Check battery water level and terminals	• Check park brake oil level
• Check front and rear axle oil level	• Lubricate driveline upper and lower sliding joints and lower U-joints
• Check air intake hoses and charge air cooler tube couplings	• Lubricate front and rear axle shaft seals
• Drain and refill engine oil and replace filter	• Take engine coolant sample
• Replace fast fill fuel breather filter—if equipped	• Take transmission oil sample
• Replace primary fuel filter	• Take hydraulic oil sample
• Replace final fuel filter	• Take axle oil sample
• Replace hydraulic reservoir breather filter	• Take diesel fuel sample
• Lubricate front and rear shaft seals on park brake	• Check ride control accumulator
Every 1000 Hours	
• Replace engine air cleaner elements	• Replace axle oil filters
• Replace air cleaner dust unloader valve	• Clean hydraulic fan drive case drain in-line screen
• Check coolant condition	• Lubricate frame hinge pivots
• Replace fuel tank breather filter	• Drain and refill park brake oil
Every 2000 Hours	
• Replace outer pin seals	• Drain and refill front and rear axle oil
• Check and adjust engine valve lash (clearance)	• Replace diesel exhaust fluid (DEF) dosing unit filter
• Rerun transmission clutch calibration (cab monitor)	• Replace diesel exhaust fluid (DEF) header suction screen (S.N. —678012)
• Drain and refill transmission oil and replace filter	• Clean diesel exhaust fluid (DEF) tank (S.N. —678012)
Every 4000 Hours	
• Clean hydraulic pump case drain in-line screens	• Replace diesel exhaust fluid (DEF) tank breather filter
• Clean hydraulic system fill strainer	• Clean diesel exhaust fluid (DEF) tank (S.N. 678013—)
• Drain, flush, and refill hydraulic system oil	• Inspect diesel exhaust fluid (DEF) Baffle (S.N. 678013—)
• Replace hydraulic system return filter	• Replace diesel exhaust fluid (DEF) header suction filter (S.N. 678013—)
Every 5000 Hours	
• Check driveline damper for cracks	
Every 6000 Hours	
• Drain and refill cooling system	