

FILTER OVERVIEW WITH SERVICE INTERVALS AND CAPACITIES

M4040DN Nutrient Applicator

CAB AIR FILTER RECIRCULATION

ACTIVATED CARBON - [RE199682](#)
 Replace after every 500 hours or annually, whichever occurs first and as required.



CAB AIR FILTER

ACTIVATED CARBON - [RE199681](#)
 Replace after every 500 hours or annually, whichever occurs first and as required.



ON BOARD AIR (OBA)

AIR DRYER CARTRIDGE - [AN204967](#)
 Replace annually.



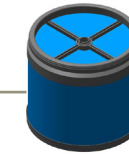
HYDRAULIC SYSTEM

HYDRAULIC FILTER - [AT314164](#)
 Replace after every 1000 hours.
 (Click here for [capacity](#))



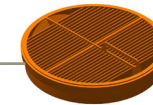
HYDROSTATIC SYSTEM

OIL FILTER - [AKK23814](#)
 Replace after every 1000 hours.



ENGINE

PRIMARY AIR FILTER - [RE196945](#)
 Change as needed, or if the restriction indicator is on.



ENGINE

SECONDARY AIR FILTER - [RE181915](#)
 Change every second exchange of the primary air filter.



**WATER SEPARATOR
FILTERING ELEMENT - [RE541922](#)**
 Replace annually.



ENGINE

FUEL FILTER - [RE522878](#)
 Replace after every 500 hours.

ENGINE

OIL FILTER - [RE504836](#)
 Replace after first 100 hours then after first 500 hours and every 500 hours thereafter. The extended 500 hour interval is only allowed if using Plus-50™ II oil, JD OEM Oil Filter and diesel fuel with sulfur content less than 15mg/kg (15 ppm).
 (Click here for [capacity](#))



JOHN DEERE

Genuine Parts and Service

CAPACITIES

M4040DN Nutrient Applicator

CAPACITIES (Approximate):

Fuel Tank:

..... 503 L (133 gal)

**Cooling System with Heater:
Cool-Gard™ II**

..... 29.7 L (7.85 gal)

**Crankcase including Filter:
Plus-50™ II**

..... 26 L (6.87 gal)

**Hydraulic Reservoir:
Torq-Gard™ Supreme**

..... 62 L (16.4 gal)

Hydraulic System:

Torq-Gard™ Supreme

..... 122 L (32.2 gal)

**Final Drives (Front Hubs) Each:
GL-5**

..... 1.2 L (0.32 gal)

**Final Drives (Rear Hubs) Each:
GL-5**

..... 1.5 L (0.39 gal)

[Return to Filter Overview](#)

