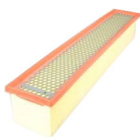


REPLACEMENT PARTS GUIDE

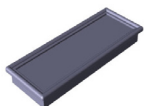
CP770 Cotton Picker

CAB



FRESH AIR FILTER [RE284091](#)

Clean or replace every 50 hours or as required. If operating in dusty conditions clean daily.



RECIRCULATION AIR FILTER [AXE70605](#)

Clean or replace every 250 hours or as required. If operating in dusty conditions clean daily.

ENGINE



PRIMARY FUEL FILTER [DZ124761](#)

Replace every 400 hours or annually, whichever occurs first.



SECONDARY FUEL FILTER [DZ124786](#)

Replace every 400 hours or annually, whichever occurs first.



PRIMARY AIR FILTER [HXE11090](#)

Replace every 400 hours or as required.



SECONDARY AIR FILTER [HXE11091](#)

Replace every 400 hours or annually, whichever occurs first.

HYDRAULICS



PUMP FILTER [AKK43338](#)

Replace every 1000 hours.



ENGINE



FUEL TANK BREATHER [H216169](#)

Replace every 2000 hours.



OIL FILTER [RE572785](#)

Minimum hours before first engine oil change is 100 hours. Extended engine oil change every 375 hours or annually, whichever come first. The extended 375 hour interval is only allowed if using Plus-50™ II oil with a John Deere filter and diesel fuel with sulfur content less than 15mg/kg (15ppm). If all conditions are not met, change oil and filter at 250 hours of operation.



DIESEL EXHAUST FLUID DOSING FILTER [DZ114640](#)

Replace after first 1500 hours or 3 years, whichever occurs first.



DIESEL EXHAUST FLUID PUMP FILTER KIT [DZ124403](#)

Replace after first 1500 hours or 3 years, whichever occurs first.

HYDRAULICS



PROPEL PUMP CHARGE FILTER [RE273801](#)

Replace every 1000 hours.



CHASSIS RETURN OIL FILTER [AKK33523](#)

Replace every 1000 hours.

UNIT GREASE SYSTEM



LUBRICATION SYSTEM FILER [AN192848](#) (2)

Replace every 250 hours.



AUXILIARY GEAR CASE OIL FILTER [AKK28711](#)

Replace every 1000 hours.



FUEL PRECLEANER FILTER [R502778](#)

Replace every 400 hours or annually, whichever occurs first.



CAPACITIES

CP770 Cotton Picker

CAPACITIES (Approximate):

Fuel Tank:

.....1250 L (330 gal)

Diesel Exhaust Fluid Tank (Final Tier 4/Stage IV only): John Deere Diesel Exhaust Fluid™

.....104.4 L (27.5 gal)

Moisture Solution Tank:

John Deere Spindle Cleaner™

.....1363 L (360 gal)

Cooling System:

Cool-Gard™ II

Final Tier 4 / Stage IV68.1 L (18 gal)

Engine Crankcase (Includes Filter):

Plus-50™ II

Final Tier 4/Stage IV56.7 L (15 gal)

Hydraulic Oil Reservoir:

Hy-Gard™

.....113.5 L (30 gal)

Hydraulic/Hydrostatic System:

Hy-Gard™

.....216 L (57 gal)

Final Drive: (2 used)

GL-5

Standard Capacity7.8 L (2 gal)

High Capacity23 L (6.1 gal)

Lubrication System Grease Tank:

John Deere Spindle Lubricant™

.....257 L (68 gal)

Row Unit Gearcase: (6 used)

Hy-Gard™

.....0.66 L (0.17 gal)

Rear Axle Main Body Housing:

GL-5

.....9.9 L (2.6 gal)

Rear Axle Auxiliary Gearbox:

GL-5

.....1.3 L (0.34 gal)

Rear Axle Planetary Gearbox (2 Used):

GL-5

.....3.8 L (1 gal)

REPLACEMENT PARTS GUIDE

Cotton Harvesting Pro16 HS

ROW UNIT

 **MOISTURE COLUMN NOZZLE CAPS**
[B12888](#)

 **MOISTURE COLUMN NOZZLE**
[KK59276](#)

 **MOISTURE COLUMN COVER**
[KK65432](#)


 **MOISTURE COLUMN STRAINER**
[AB11379](#)

 **MOISTURE COLUMN HOSE FITTING**
[N276745](#)

 **GRID BARS**
[N277542](#) (Front)
[N277543](#) (Rear)


 **DOFFER SCREW**
[19M7828](#)

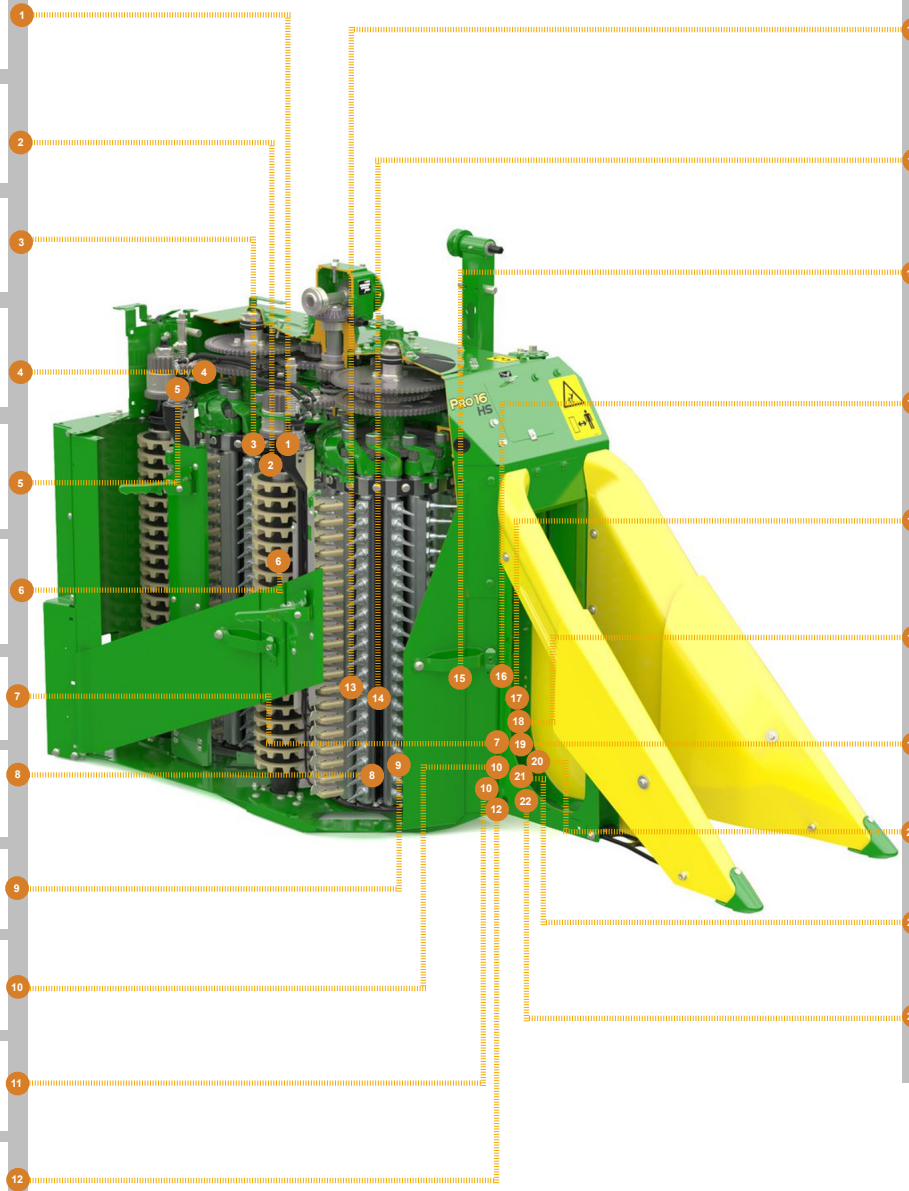
 **DOFFER ROUND RETAINER**
[N275471](#)

 **DOFFER BALL BEARING**
[AN275022](#)

 **DOFFER WASHER**
[N134803](#)

 **DOFFER SHIM**
[N400789](#)

 **DOFFER BALL SPACER**
[KK15280](#)
[KK15281](#)



ROW UNIT

 **SPRING PIN PRESSURE DOOR**
[34H314](#)

 **PRESSURE DOOR SPRING**
[N276341](#)

 **PRESSURE DOOR SHAFT/TUBE**
[AN272903](#)

 **PRESSURE DOOR EXTENSIONS**
[AN272944](#)

 **MOISTURE COLUMN DISTRIBUTOR PLATE**
[N276746](#)

 **MOISTURE COLUMN HOLDER**
[AN279609](#)

 **MOISTURE PAD**
[N275607](#)

 **DOFFER ASSEMBLY**
[AKK17562](#)

 **DOFFER**
[AN406038](#)

 **STALK-LIFTER GUIDE ROD**
[N192711](#)

REPLACEMENT PARTS GUIDE

Cotton Harvesting Pro16 HS

ROW UNIT



ROW UNIT DRUM HEAD BEARING
[JD9209](#) (Top)
[JD9323](#) (Bottom)



PICKER BAR CAM FOLLOWER
[N198724](#)



PICKER BAR SLEEVE
[N279372](#)



SPINDLE PICKER BAR
[AKK49979](#)



SPINDLE DRIVE SHAFT SPRING PIN
[34H60](#)



SPINDLE NUT
[AN111948](#)



SPINDLE NON-ASSEMBLED PRO
[KK28390](#)



SPINDLE ASSEMBLED PRO
[AKK18840](#)



SPINDLE NON-ASSEMBLED PRO XL
[KK28390](#)



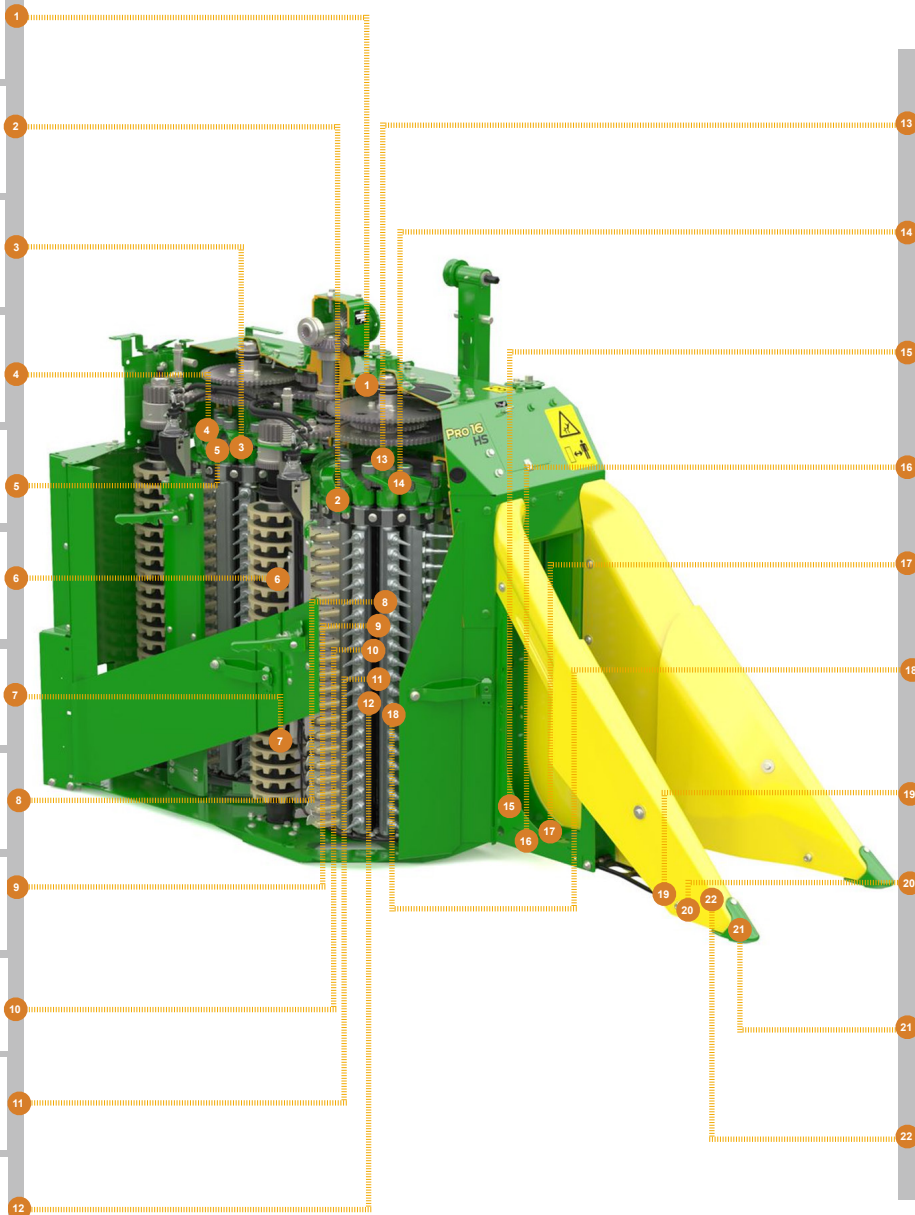
SPINDLE DRIVE SHAFT SPUR GEAR
[N118289](#)



SPINDLE ASSEMBLED PRO XL
[AKK18840](#)



CROP LIFTER ARM
[KK51194](#)



ROW UNIT



PICKER BAR BEARING HOUSING
[N370976](#)



SPINDLE LOCKING COLLAR
[N279986](#)



PICKER BAR BUSHING
[N193500](#)



SPINDLE DRIVE SHAFT NEEDLE BEARING
[JD8804](#)



CROP LIFTER GUIDE ANGLE
[N379096](#)



CROP LIFTER GUIDE
[N379098](#)



ROW-TRAK GUIDANCE PLATE
[N374994](#) (RH)
[N374993](#) (LH)



CROP LIFTER SHOE
[KK93616](#) (LH)
[KK93615](#) (RH)



CROP LIFTER SHOE POINT
[N375594](#)



STALK-LIFTER ROD PLATE
[KK39149](#)



JOHN DEERE
 Genuine Parts and Service

NX549012R2
 Jun.2023. Release Date.

CLICK PART NUMBER TO BUY
 *See operator's manual for additional details.

REPLACEMENT PARTS GUIDE

Cotton Harvesting Pro16 HS

ROW UNIT



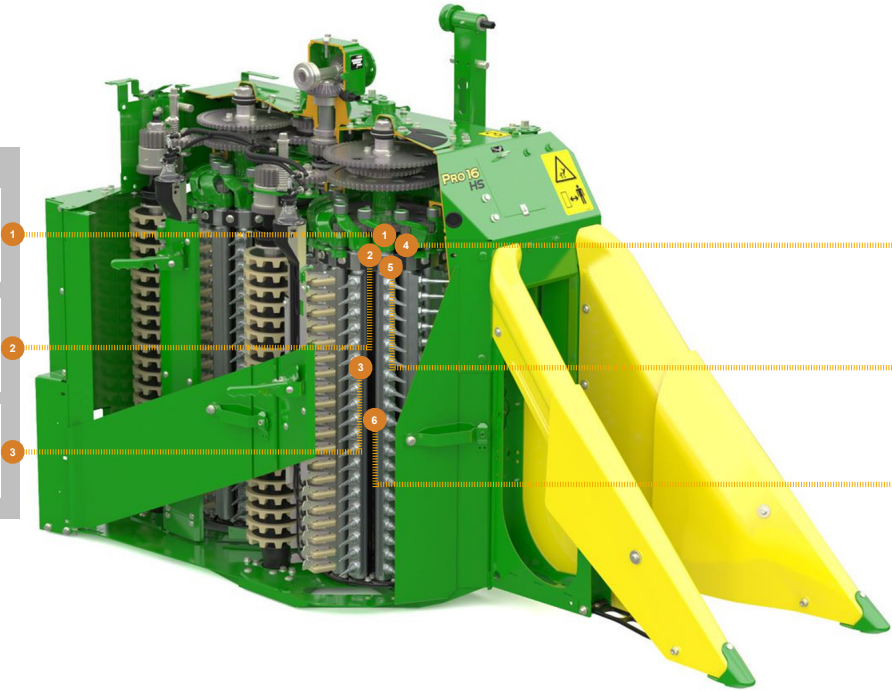
**SPINDLE DRIVE SHAFT
THRUST WASHER**
[N278781](#)



**SPINDLE DRIVE SHAFT
SLEEVE**
[N278782](#)



**SPINDLE DRIVE SHAFT
BEVEL GEAR**
[N371626](#)



ROW UNIT



**SPINDLE DRIVE SHAFT SNAP
RING**
[T23694](#)



**SPINDLE DRIVE SHAFT
SPRING PIN**
[34H235](#)



SPINDLE DRIVE SHAFT
[AN276737](#)